

# General Plan Elements

HOUSING  
COMMUNITY DESIGN  
CIRCULATION  
NOISE

# HOUSING ELEMENT

- Plan for all income levels.
- Improve quality of housing.
- Plan for special needs populations.
- Promote energy conservation.

## Affordability

## Quality

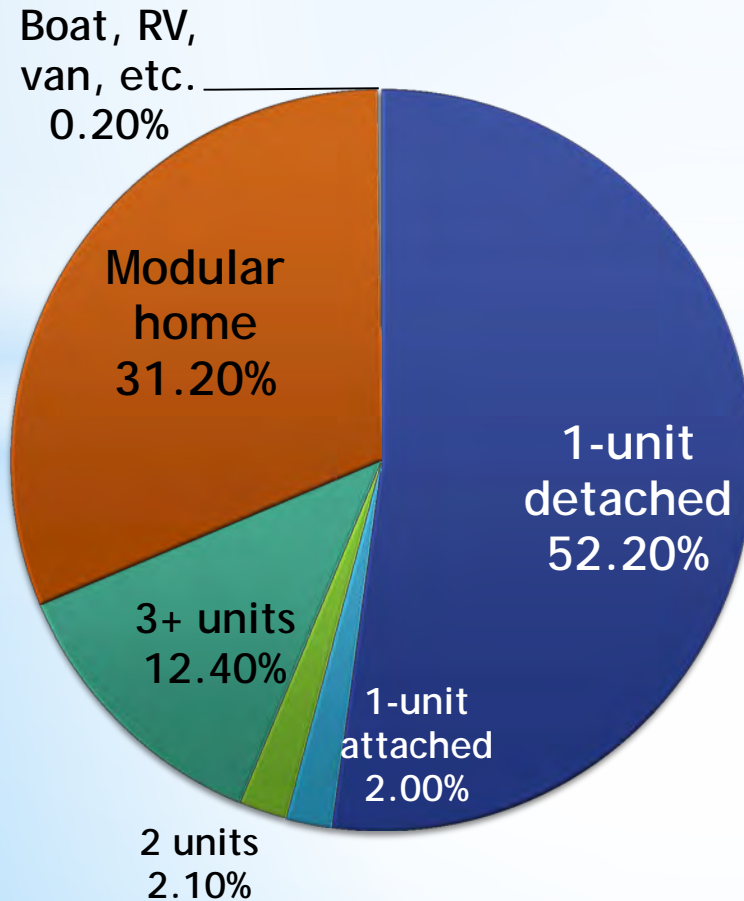
## Special Needs

## Energy

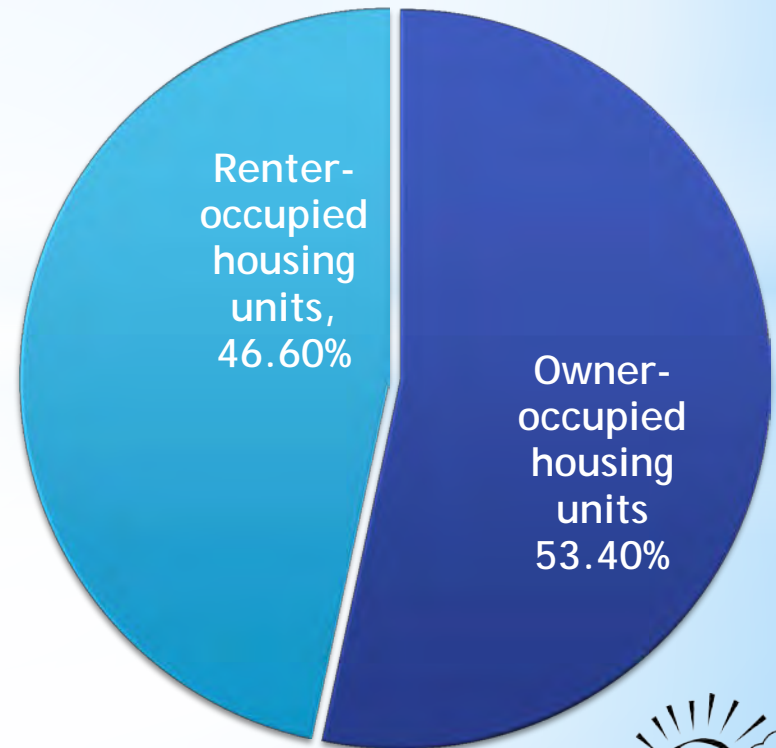


# Clearlake Today

Housing Types



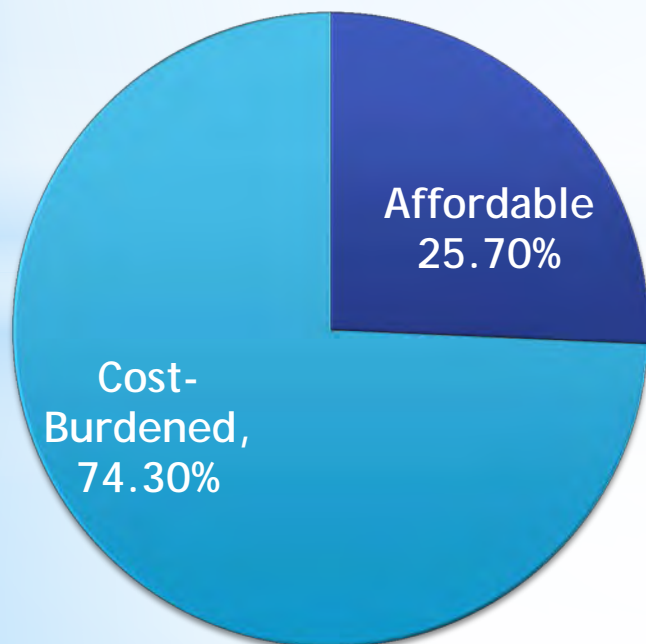
Housing Tenure



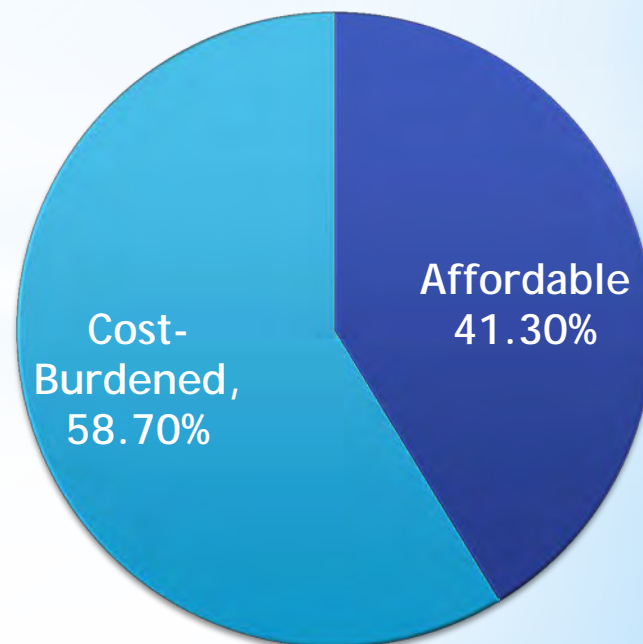
# Clearlake Today

## Affordability of housing

Owners



Renters





# Clearlake Today

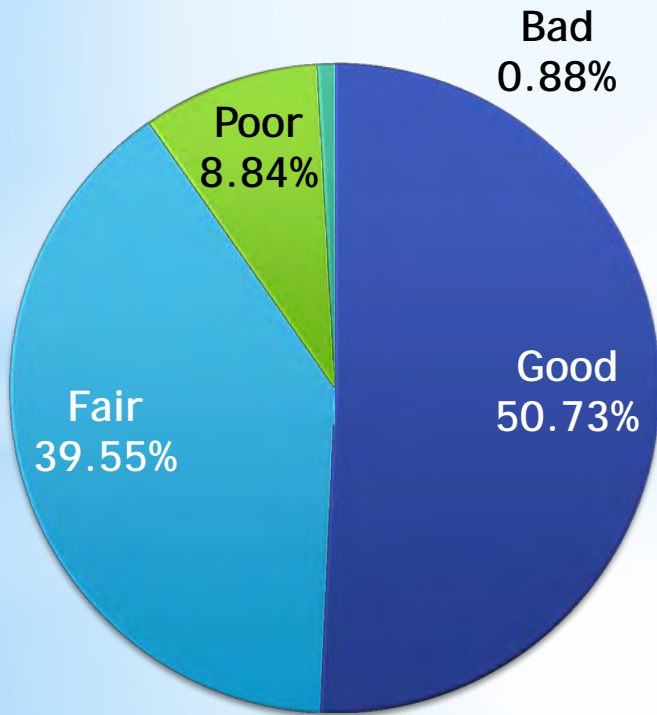
Housing Needs, according to the City of Clearlake's 2010-2016 Housing Element

Income Category	RHNP Housing Units Needed	
	Number of Units	Percent
Very Low	196	16%
Low	138	11%
Moderate	270	22%
Above Moderate	624	51%
<b>Totals</b>	<b>1,228</b>	<b>100%</b>
Source: Regional Housing Needs Plan, August 2008		

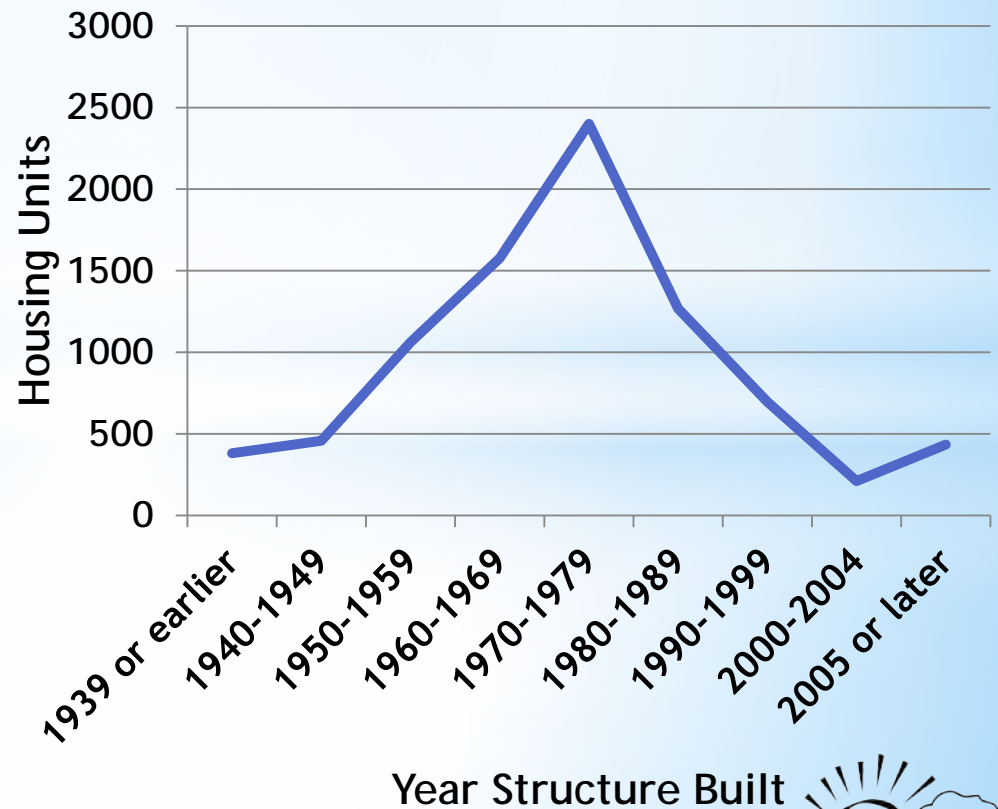


# Clearlake Today

Housing Quality in Clearlake,  
based on Land-Use Inventory



Age of Housing Structures  
in Clearlake



# Community Input

Housing variety  
(incl. rental)



Affordable housing



Property Values



Revitalize dilapidated buildings





# Emerging Directions

- How can Clearlake increase housing value and quality?
- How can Clearlake provide residents with more housing choices?
- How can Clearlake provide adequate and comfortable housing for all income groups?





# Community Design

CHARACTER



SENSE OF PLACE



IDENTITY



# Clearlake Today

Lake County 2030 Blueprint (2011)



Lakeshore Design Guidelines by  
Clearlake Vision Task Force (2007)



CITY OF CLEARLAKE,  
CALIFORNIA

MUNICIPAL CODE





# Community Input

Rural, small town character



Tranquil and scenic



Auto-oriented



Mostly single family homes -  
No dominant architectural styles



# Emerging Directions

## ARCHITECTURAL & STREET DESIGN



## DESIGN GUIDELINES

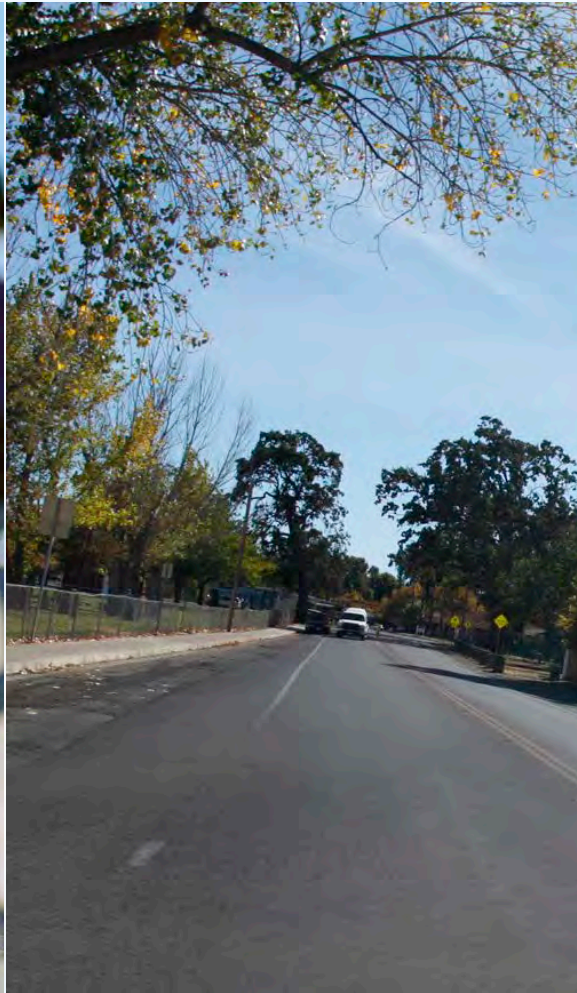


## AREAS FOR REVITALIZATION





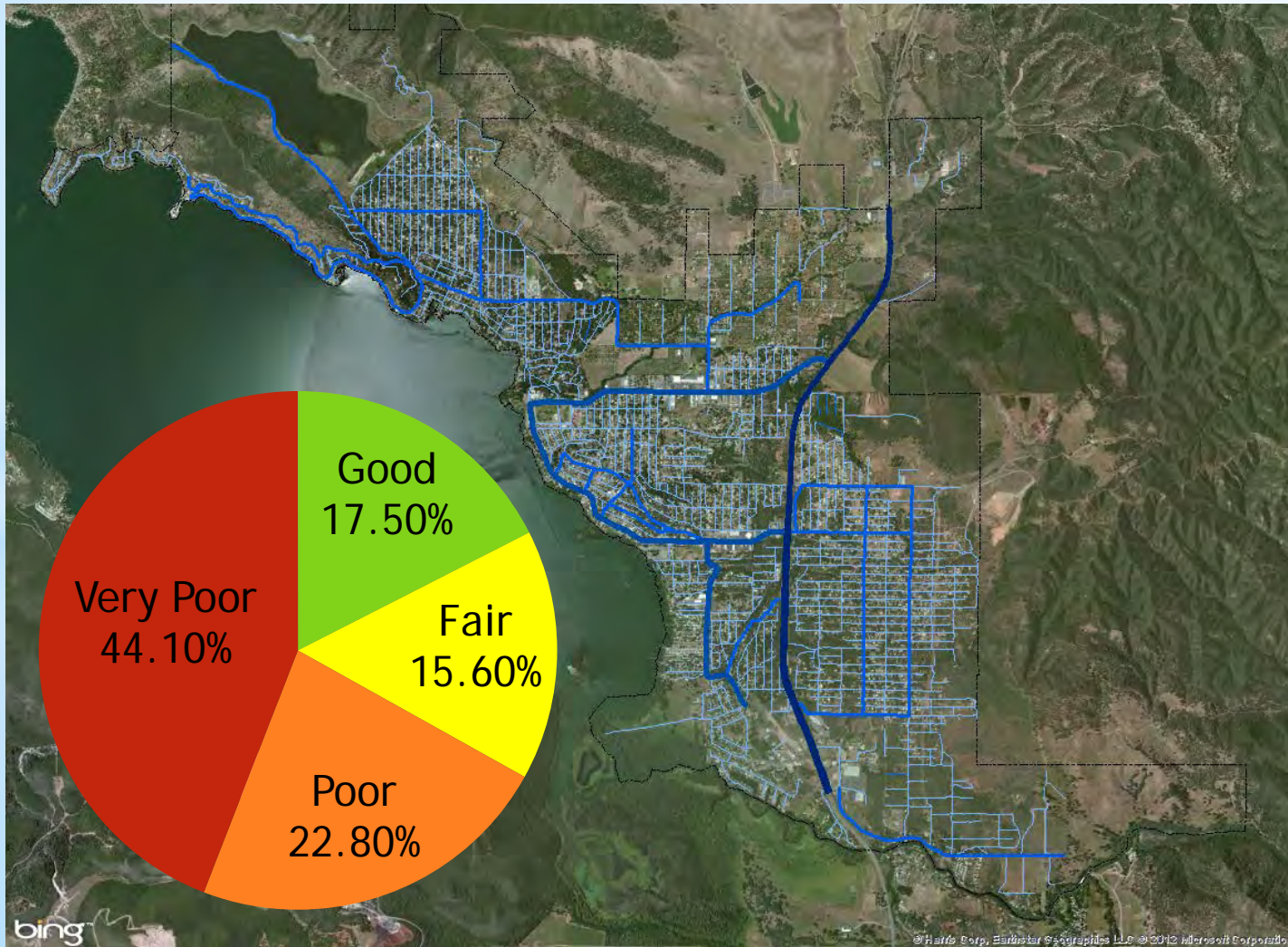
# CIRCULATION





# Clearlake Today

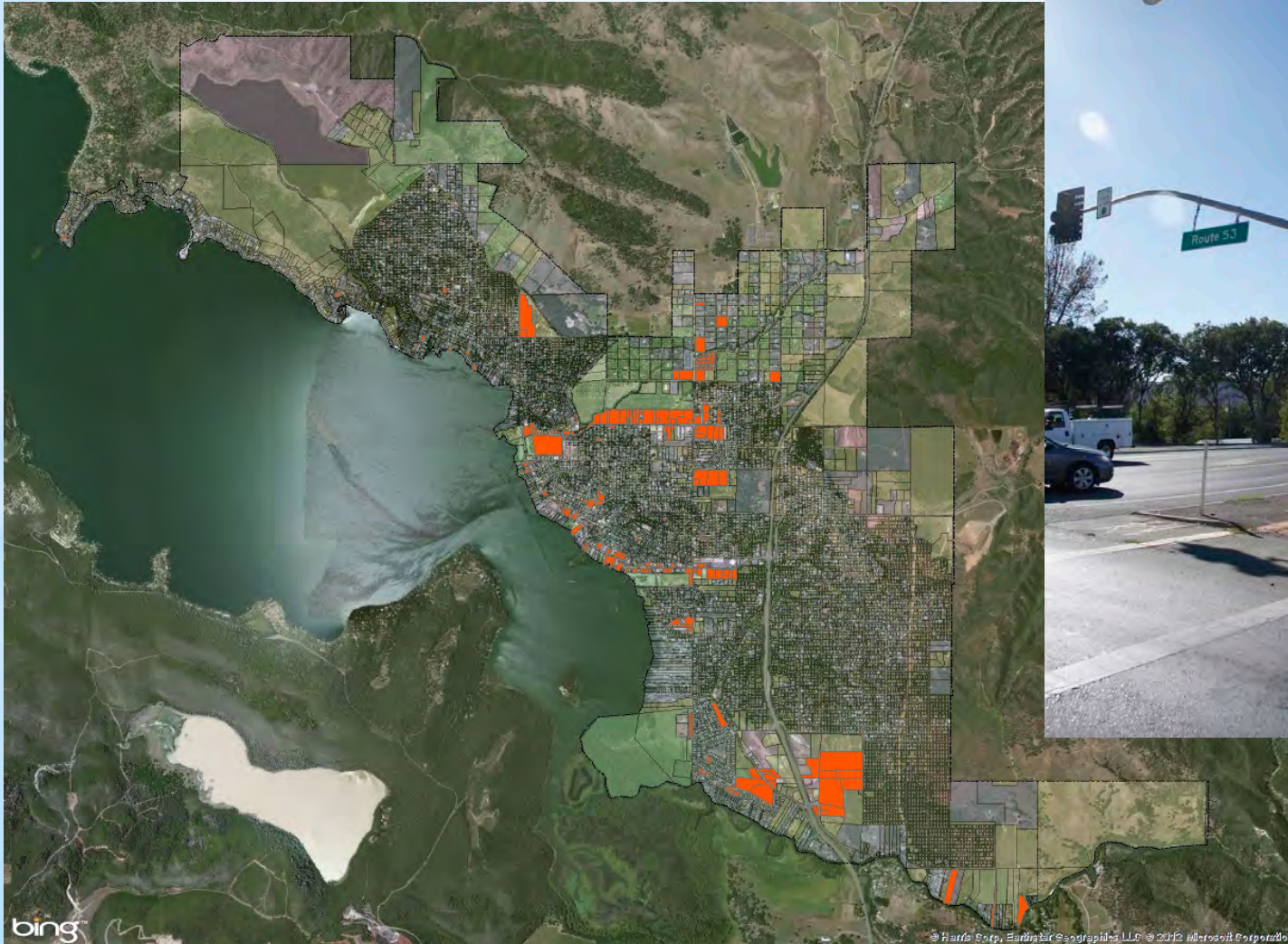
## Street Network





# Clearlake Today

## Sidewalk Conditions





# Clearlake Today





# Clearlake Today





# Community Feedback

Paved Avenues



Regional public transportation connections



Sidewalk Need



Safe bike path for kids



# Emerging Directions

Should Clearlake be a more walkable community?



Should Clearlake be a more bike-able community?

Should there be more safe pedestrian and biking opportunities to cross SR 53?





# Noise

## Sources



## Receptors



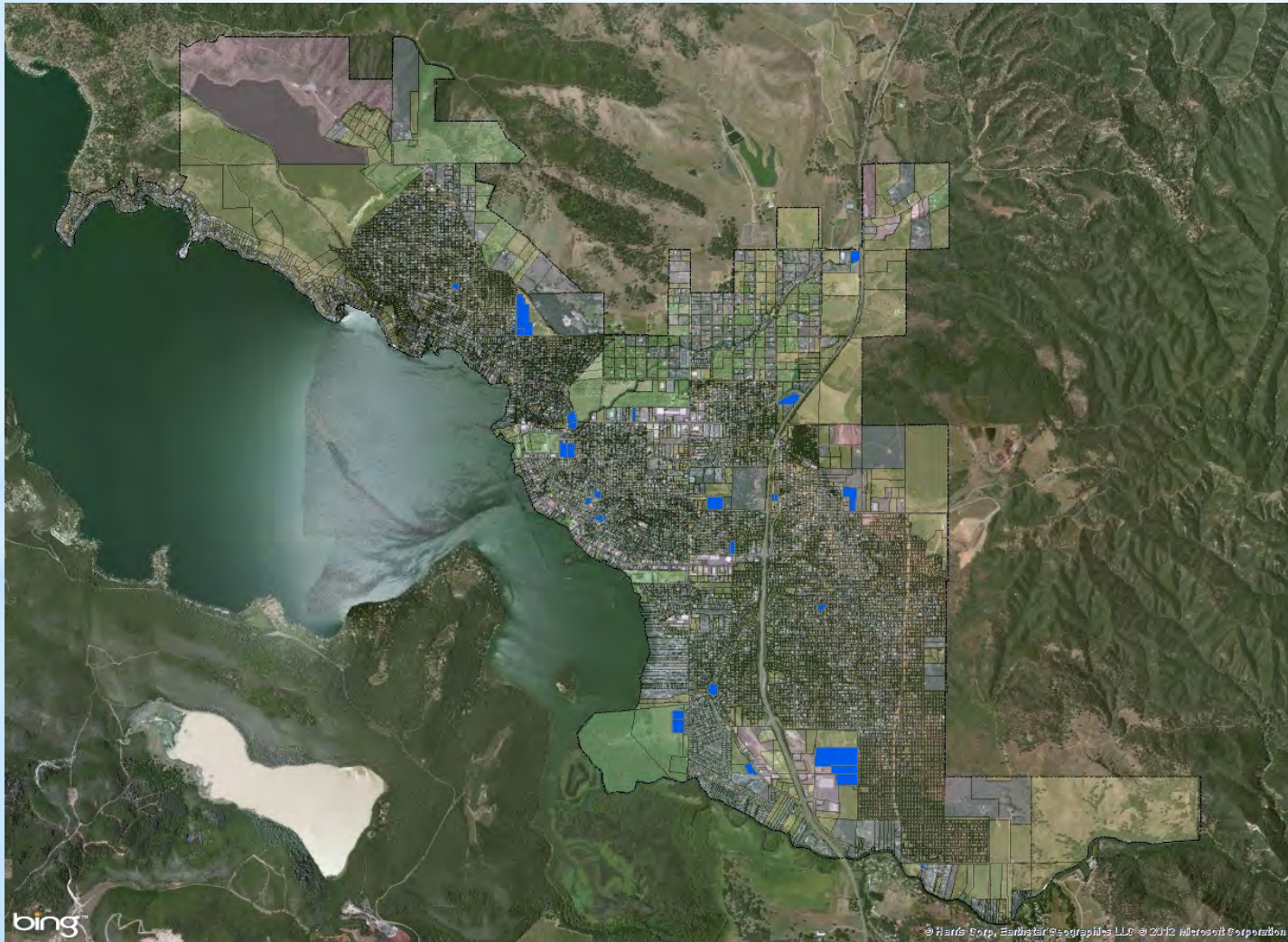


# Clearlake Today





# Clearlake Today





# Community Feedback

## Calm & Quiet Neighborhood



## Sensitive Land Uses



# Emerging Directions

- What can be done to keep the noise levels of the main roads down?
- What can be done about the local neighborhood noise levels?





# BREAKOUT

# General Plan Elements

OPEN SPACE  
CONSERVATION  
PUBLIC FACILITIES  
SAFETY

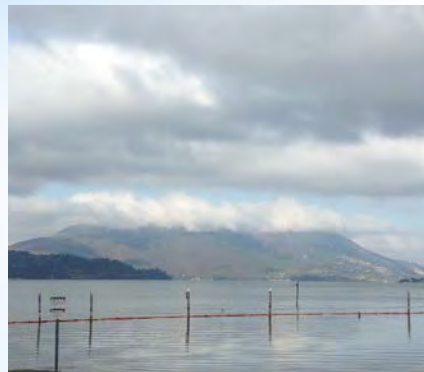


# OPEN SPACE ELEMENT

Parks are a space for gathering and recreation.

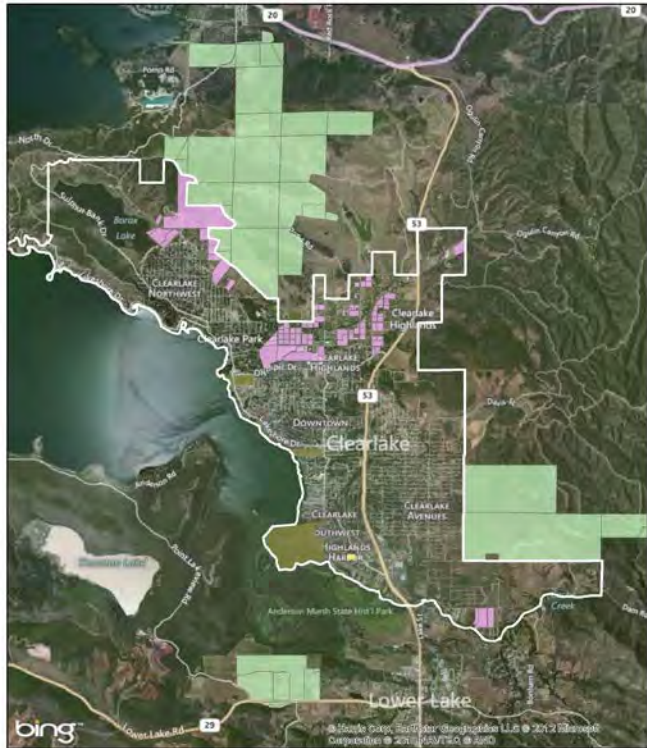


Open space provides aesthetic beauty.



# Clearlake Today

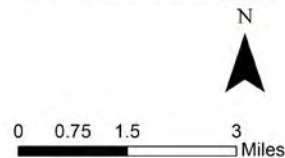
Open Space in Clearlake



**Legend**

**openspace**

- Agriculture
- Park
- Streams/Drainage
- Ag\_Preserve

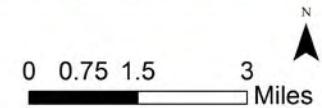


Buffers of 1/2-Mile Access to City Parks



**Legend**

- parks\_Buffer
- parks





# Community Feedback

- Limited lakefront public access
- Need for park enhancements
- Preservation of views



# Emerging Directions

What recreational facilities and activities should parks incorporate for youth and adults?

What can the city do to enhance and capitalize on the lakefront and preserve view sheds?

Where should parks be added to increase park access?





# CONSERVATION ELEMENT

Natural Resources:

Water

Air

Plants and Animals

Soils and Minerals



# Clearlake Today

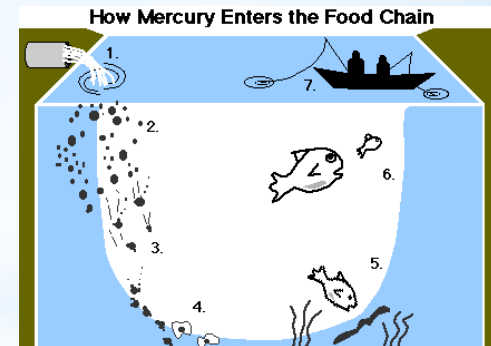
## Water Supply



## Water Quality



## Water Pollution





# Clearlake Today

## Rural Setting




## Sources of Pollution



## Cleanest Air in California





LAKE COUNTY AIR QUALITY  
MANAGEMENT DISTRICT  
885 Lakeport Blvd  
Lakeport, CA 95453  
Phone (707) 263-7000  
Fax (707) 263-0421

**Douglas G. Gearhart**  
Air Pollution Control Officer  
doug@lcaqmd.net

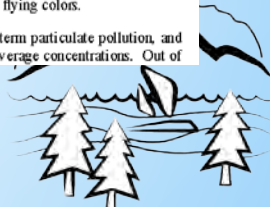
**-PUBLIC INFORMATION RELEASE-**

CONTACT: Douglas Gearhart, APCO @ 263-7000      RELEASE DATE: April 25, 2012

**Lake County Ranked 8<sup>th</sup> in the Nation for Clean Air**  
**by the American Lung Association**

The American Lung Association (ALA) released its annual State of the Air 2012 Report. State and local area air quality are graded on an A through F scale by comparing local ozone and small-particulate concentrations with the federal air quality standards. Although many areas, especially within California, were given failing grades, Lake County passed with flying colors.

Lake County received an "A" grade for Ozone, a "B" grade for short term particulate pollution, and is ranked the 8<sup>th</sup> cleanest county in the Nation for annual particulate average concentrations. Out of



# Clearlake Today

## Endangered Plant and Animal Species





# Community Feedback

“What I love about Clearlake is the natural beauty of the area”



“The Lake is Dirty and Smelly!”

“The poor health of the Lake  
deters tourists”



# Emerging Directions

How can the city balance economic growth and conservation?

What are the City's short-term and long-term goals for resource conservation?

What conservation issues require immediate attention?





# PUBLIC FACILITIES & SERVICES

Police and Fire Stations



Schools and the libraries



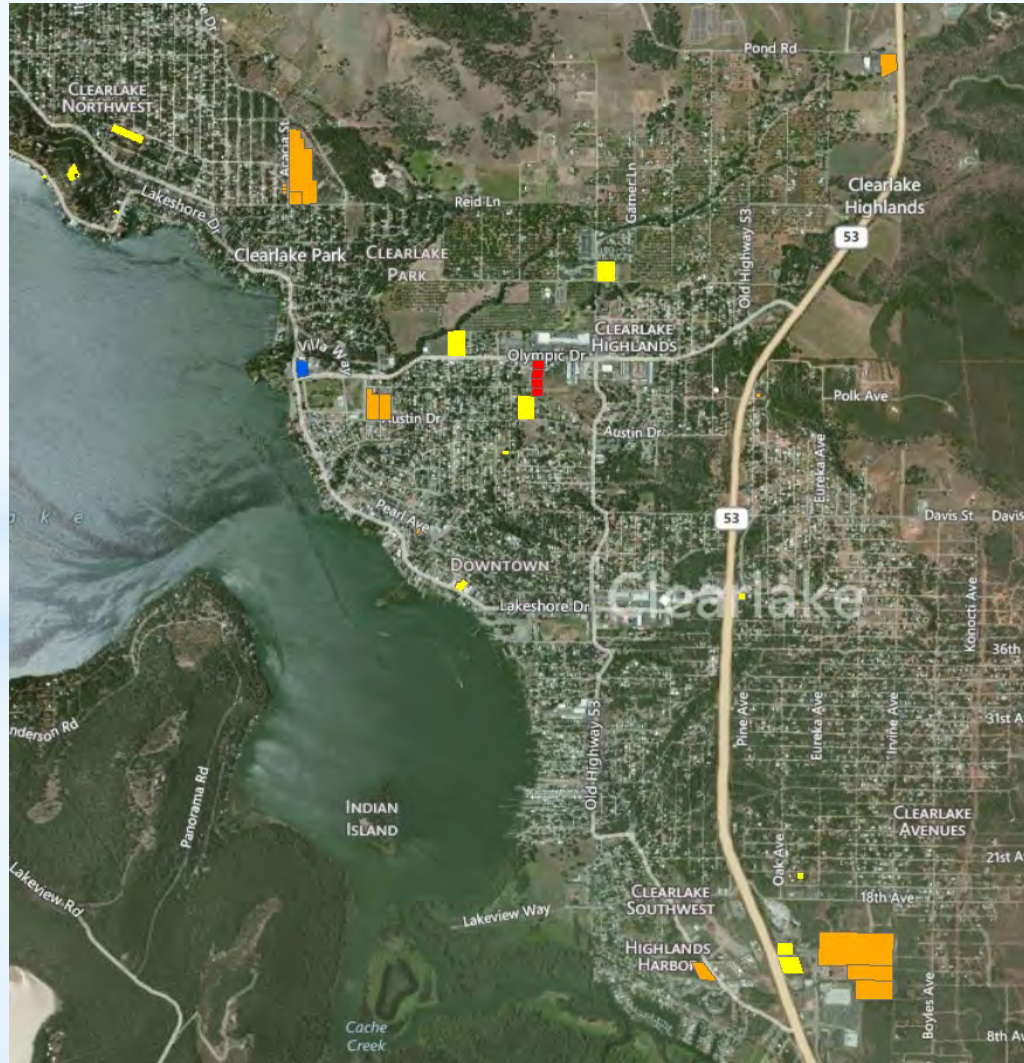
Waste and recycling



Water Service and Storm Water Management



# Clearlake Today





# Community Feedback

Quality of Infrastructure



Trash



Children's Programs & Facilities



Homeless shelter



Animal control



# Emerging Directions

- What training centers are needed?
- How can facilities be better maintained?
- How can Clearlake deal with illegal dumping?
- How can academic performance be improved?





# SAFETY ELEMENT



Fire



Floods



Earthquakes



Volcanoes



Hazardous Materials



Crime

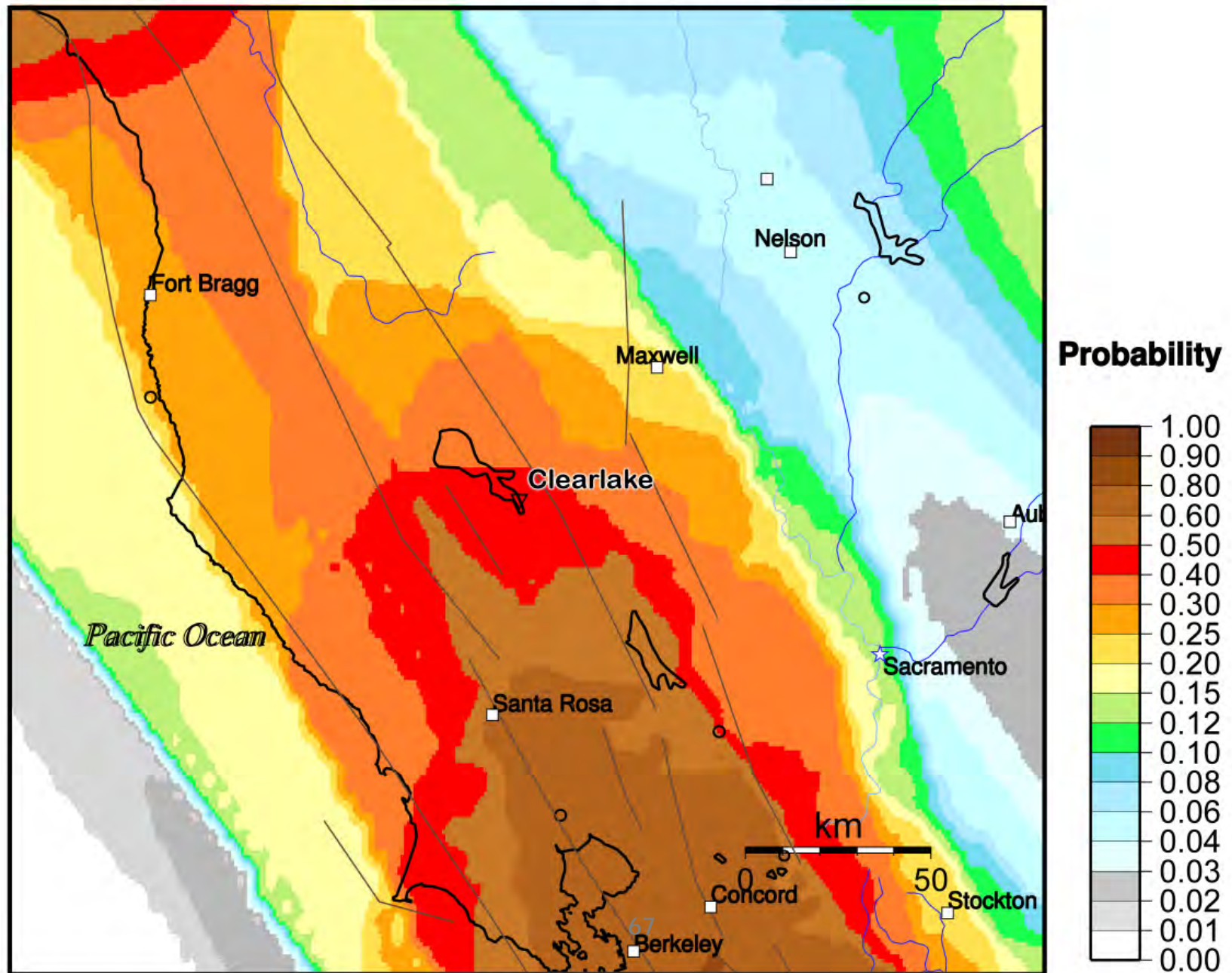


# Flood & Fire Hazard Map





# Probability of earthquake with $M > 6.0$ within 30 years & 50 km



# Community Feedback

## Anchors



Increase in drug use



Limited police control  
& code enforcement



Insufficient animal  
control

## Likes



A safe neighborhood feel &  
great place to raise kids





# Emerging Directions

- How should drug use, violence, and animal control be dealt with?
- What should be done to mitigate flood, fire and other natural hazards?
- What would make the City a safe place for you?



# BREAKOUT





**LUNCH TIME!**



# SUMMARY FROM BREAKOUTS







# THANK YOU!

Your participation is greatly appreciated.  
Please continue to be a part of the process!

For more information or to comment further, please visit:

Website: <http://planclearlake.weebly.com>

Email: [planclearlake@gmail.com](mailto:planclearlake@gmail.com)



**CAL POLY**

